



SHEFFIELD CITY COUNCIL

Cabinet Highways Committee Report

11

Report of: Executive Director, Place

Date: 9th February 2012

Subject: Butterthwaite Road No Parking Traffic Regulation Order

Author of Report: John Bann, Head of Transport & Highways

Summary:

To Report to Cabinet Highways Committee an objection received to a Traffic Regulation Order prohibiting car parking on the Butterthwaite Road/Ecclesfield Road green space triangle, recently improved as part of the Shiregreen Streetscene improvements.

Reasons for Recommendations:

The improvements to the green space triangle are part of the overall streetscene improvements, funded by Sanctuary Housing Association across the whole of Shiregreen. The improvements include the provision of footways and planting areas, and the work would have been abortive if the area were to be used as an “unofficial” residents car park. The prohibition of car parking on the triangle will also improve visibility at the road junction for drivers.

Recommendations:

Overrule the objection, and the Traffic Regulation Orders be made in accordance with the Road Traffic Regulation Act 1984.
Inform the objector accordingly.

Background Papers: Previous reports to Cabinet Highways Committee and Scrutiny Committees, on the Shiregreen Streetscene Improvements..

Category of Report: OPEN

Statutory and Council Policy Checklist

Financial implications
NO Cleared by: Tracey Blades
Legal implications
NO Cleared by: Julian Ward
Human rights implications
NO
Tackling Health Inequalities implications
NO
Equality of Opportunity implications
NO Cleared by: Ian Oldershaw
Environmental and Sustainability implications
YES Cleared by: John Bann
Economic impact
NO
Community safety implications
NO
Human resources implications
NO
Property implications
NO
Area(s) affected
Shiregreen
Relevant Scrutiny Board if decision called in
Culture, Economy & Sustainability
Is the item a matter which is reserved for approval by the City Council?
NO
Press release
NO

OBJECTION TO PROPOSED “NO PARKING” TRAFFIC REGULATION ORDER ASSOCIATED WITH THE BUTTERTHWAITE RD/ECCLESFIELD RD GREEN SPACE.

1.0 SUMMARY

1.1 To Report to Cabinet Highways Committee an objection received to a Traffic Regulation Order prohibiting car parking on the Butterthwaite Road/Ecclesfield Road green space triangle, recently improved as part of the Shiregreen Streetscene improvements.

2.0 WHAT DOES THIS MEAN FOR THE PEOPLE OF SHEFFIELD

2.1 The Shiregreen Streetscene works have and will provide a significant improvement to the area. The environmental improvements to the green spaces in general, and a particular triangle of land in a prominent location, will benefit the whole area. It will contribute to the Standing Up for Sheffield objective for A Great Place to Live.

3.0 OUTCOME AND SUSTAINABILITY

3.1 All residents of Shiregreen have benefited through their involvement in the design process, and through the streetscene and open space improvements themselves. Both will generate a greater ownership of their area and commitment to its future.

4.0 REPORT

4.1 From the end of 2009, Sanctuary Housing Association has invested over £12million in improvements to the Streetscene across the whole of Shiregreen. The improvements, designed and implemented in partnership with the Council, have been made to footways and footpaths, grass verges, trees, lighting, provision of some on-street parking spaces. And the redesign and improvements to open spaces within the area.

4.2 The work has been designed and delivered in a number of Phases. Each Phase has been the subject of extensive consultation with residents, and subsequently approved by Council Members. The green space triangle at the junction of Butterthwaite Road and Ecclesfield Road was included as one of the significant improvements within Phase 3 of the proposals. A consultation event was held in the Shiregreen Arms on October 19th 2010. No comments were received on the green space proposals. The Cabinet Highways Committee approved these Phase 3 proposals on December 9th 2010. The improvements to the green space triangle were completed in August 2011.

4.3 The improvements to “the triangle” are included as Appendix A., and shown within a Location Plan in Appendix B. In this specific instance, the investment by Sanctuary, including the provision of footways and planting areas, would have been abortive if the area were to be used as an “unofficial” resident’s car park. Appendix C is a photographed example of the parking that regularly took place on the green triangle, before the improvements were made. The prevention of car parking on the triangle will also improve visibility at the road junction for drivers. Accordingly, a Traffic Regulation Order, which would make parking on the green triangle illegal, was advertised on the site in August 2011. No Parking signs will be erected on the green space and enforcement of the parking restrictions carried out by the City Council Parking Services. This is the first location in the City where this combination of signs and Traffic Regulation Order enforcement is being used.

4.4 Although the triangle is a green space and not designated for car parking, an objection to the TRO has been received – objecting to the loss of car parking. The basis of the objection is that there is nowhere safe for residents to park, and that the resident was not consulted on the proposals.

4.5 As a green space, the triangle was never intended as a parking area, in which case protecting the area with a “No Parking” TRO should not in itself lead to a loss of parking. Existing on-street parking, available to the objector, is unaffected by the scheme.

4.6 Extensive consultation and continued involvement with residents by Sanctuary Housing Association, their contractors and the Council has been a feature of each Phase of the Streetscene proposals. Nevertheless, it is apparent that the resident only became aware of the desire to prevent parking when the TRO was advertised, and after the improvement scheme had been constructed.

4.7 As a scheme to enhance the green space, rather than in this instance to provide parking, it is recommended that the objection be overruled. The North East Community Assembly has confirmed their support for this decision.

5.0 RELEVANT IMPLICATIONS

5.1 There are no negative equality impacts associated with this proposal. The green space is positive for all local people, regardless of age, sex, race, faith, disability and sexuality.

5.2 There are no additional financial implications at this stage.

6.0 ALTERNATIVES CONSIDERED

6.1 Access to off street parking within the curtilage of the resident’s property, might be possible, but because of the gradient and the need for planning permission, the costs are likely to be prohibitive. This would be the case whether the work was funded by Sanctuary or the resident. The NE

Community Assembly has funded the construction of a car park for residents of Ecclesfield Road, further to the east, but it is accepted that this would not necessarily be attractive to Butterthwaite Road residents.

6.2 Should a request be made, the Community Assembly might wish to consider funding a further car park for residents in this area, although this may be unlikely, given the current budget constraints and demand in particular for road safety schemes across the Assembly Area.

7.0 REASONS FOR RECOMMENDATION

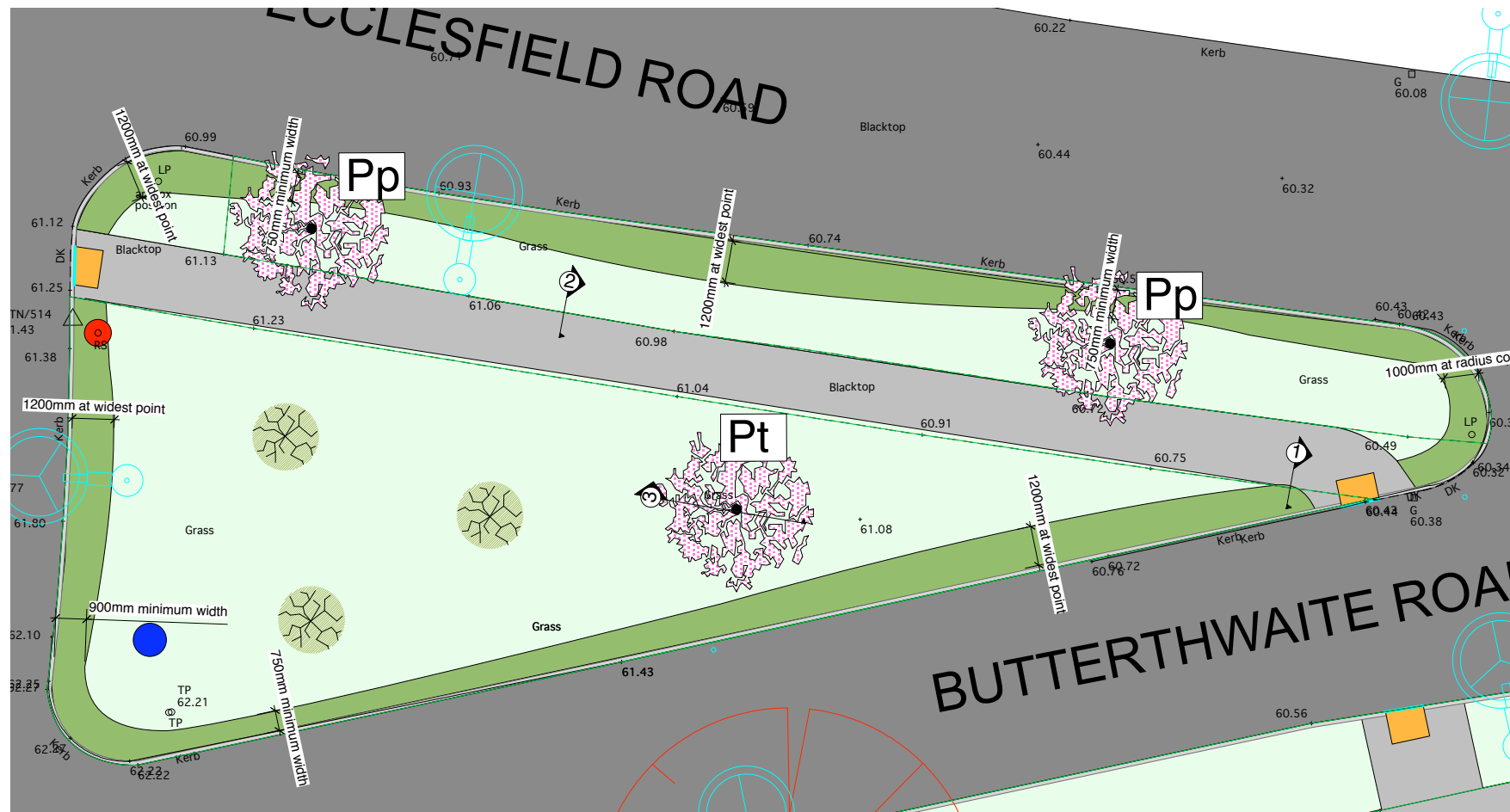
7.1 The improvements to the green space triangle are part of the overall streetscene improvements, funded by Sanctuary Housing Association across the whole of Shiregreen. The improvements include the provision of footways and planting areas, and the work would have been abortive if the area were to be used as an “unofficial” residents car park. The prohibition of car parking on the triangle will also improve visibility at the road junction for drivers.

8.0 RECOMMENDATIONS

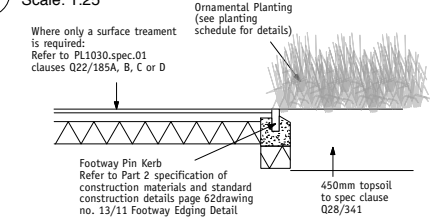
- Overrule the objection, and the Traffic Regulation Order be made in accordance with the Road Traffic Regulation Act 1984.
- Inform the objector accordingly.

Simon Green
Executive Director Place

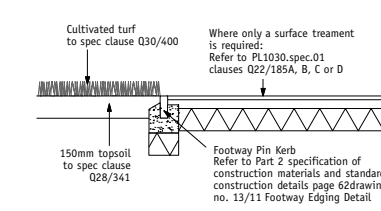
25th January 2012



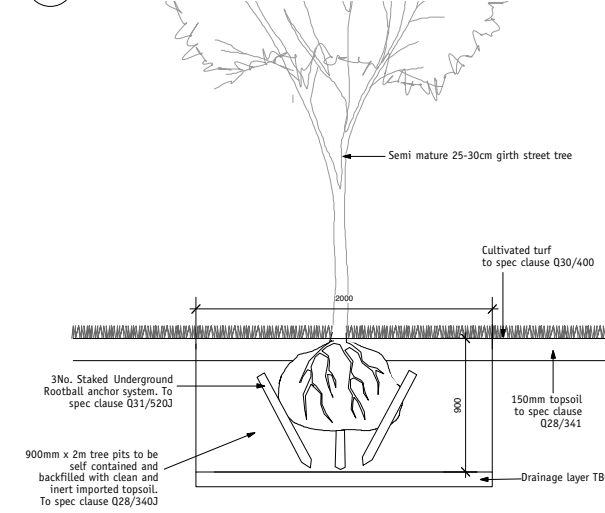
1 Tarmac surface footpath interface with ornamental planting
 Scale: 1:25



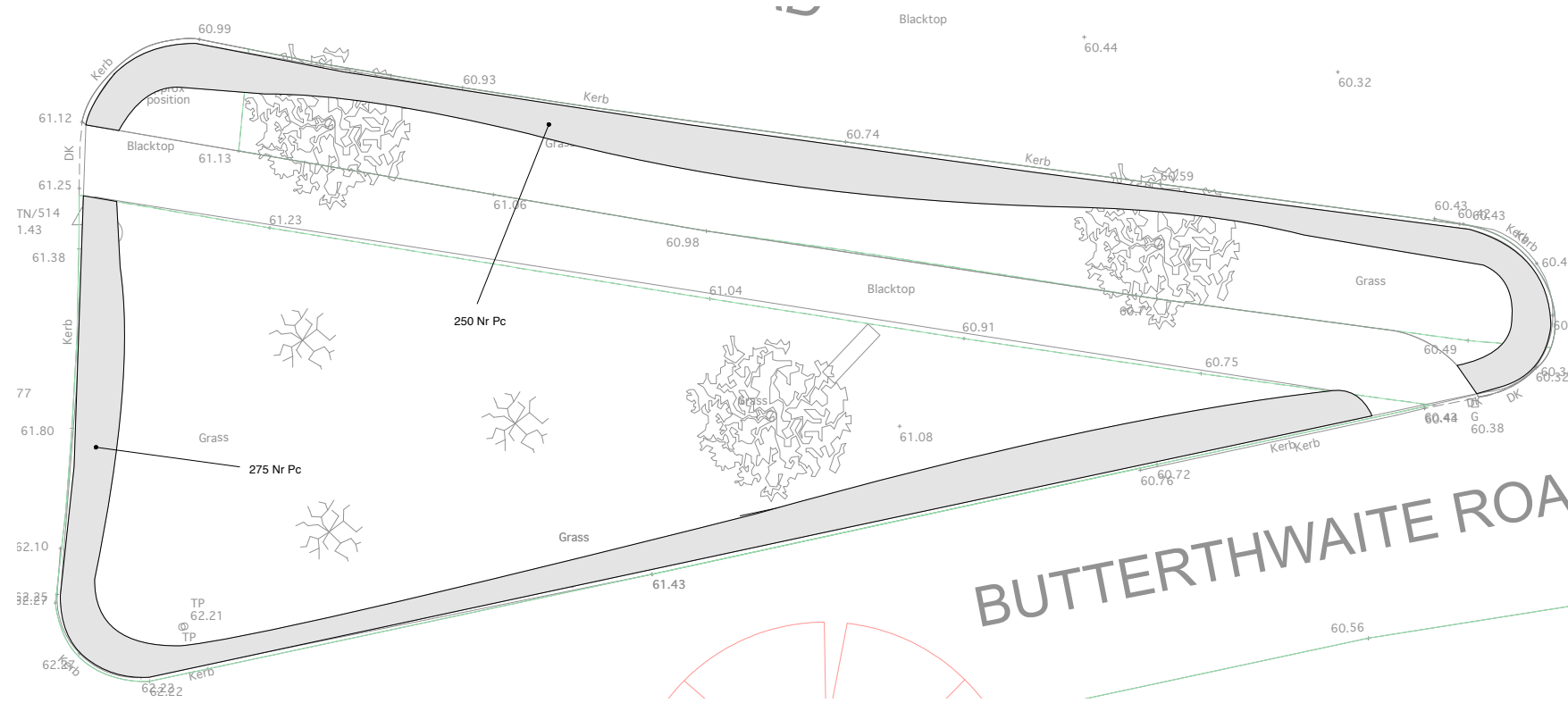
2 Tarmac surface footpath interface with grass verge
 Scale: 1:25



3 Semi-mature tree pit detail in soft landscaping
 Scale: 1:25



- HARDWORKS**
- Coloured bonded surface to footpaths
 - Where required footpaths upgraded with tarmac finish
 - Where full reconstruction is required
 - Where only a surface treatment is required
 - Existing tarmac carriageway to be retained
 - Standard Half Battered Road Kerb to be replaced where required
 - Standard drop channel
 - Bollards to discourage parking on grass verges
 - Bollards to discourage parking on grass verges & incorporate wayfinding signage
 - Wayfinding and signage
 - Existing Litter Bin
 - Existing Road Sign
 - Existing tactile paving
 - Proposed tactile paving
 - Existing lighting column - to be removed
 - Proposed lighting column position
- SOFTWORKS**
- Grass
 - Ornamental Planting
 - Wildflower
 - Proposed Fruit trees to detail Areas
 - Existing trees
 - Extent of existing grass verges to be pulled back or extended as shown on the plan
 - House numbers of privately owned homes
 - House numbers of Sanctuary homes



PLANTING SCHEDULE

Code	Species	Girth	Height	Pot Size	Habit	Number
TREES						
Pp	Prunus padus 'Albertii'	25-30cm girth	5-6m min height	RB	2m clear stem	2
Pt	Prunus Tai Haku	25-30cm girth	5-6m min height	RB	2m clear stem	1
SHRUB AND HERBACEOUS PLANTING						
Pc	Pyracantha coccinea 'Orange Glow'	Size	Density	Pot Size		
		400/500	5 per/m	4ltr		525

APPENDIX A

AC	04.07.11	Amends following VE exercise	SF	LH
AB	20.04.11	Amends following VE exercise	SF	LH
AA	01.03.11	Issued for Construction	MS	SF
Rev	Date	Description	Drawn	Checked

Status: **FOR CONSTRUCTION**

Originator:
 PLANIT-IE LTD
 2 Back Grafton Street
 Atrincham
 Cheshire
 WA14 1DY
 Tel: 0161 928 9281
 Fax: 0161 928 9284
 E-mail: mail@Planit-ie.com

Client:
 Sanctuary Housing Group

Project:
 QUADRANT 3b
 Shiregreen, Sheffield

Title:
 Q3b Greenspace Detail:
 Ecclesfield Rd / Butterthwaite
 Rd Greenspace

Designed: MS	Drawn: MS	Checked: SF
Scale @ A1: 1:100	Date: 25/01/11	Approved: LH
Drawing No.: PL1030.Q3b.D.203	Revision: AC	

Appendix B Location Plan



Green space triangle

